

Imagined Characters

22 March –
14 April 2018

Charis Entwisle

Pat O'Connor

Jennifer Louise Martin

Daniel Wheeler



Private View

Wednesday 21st March

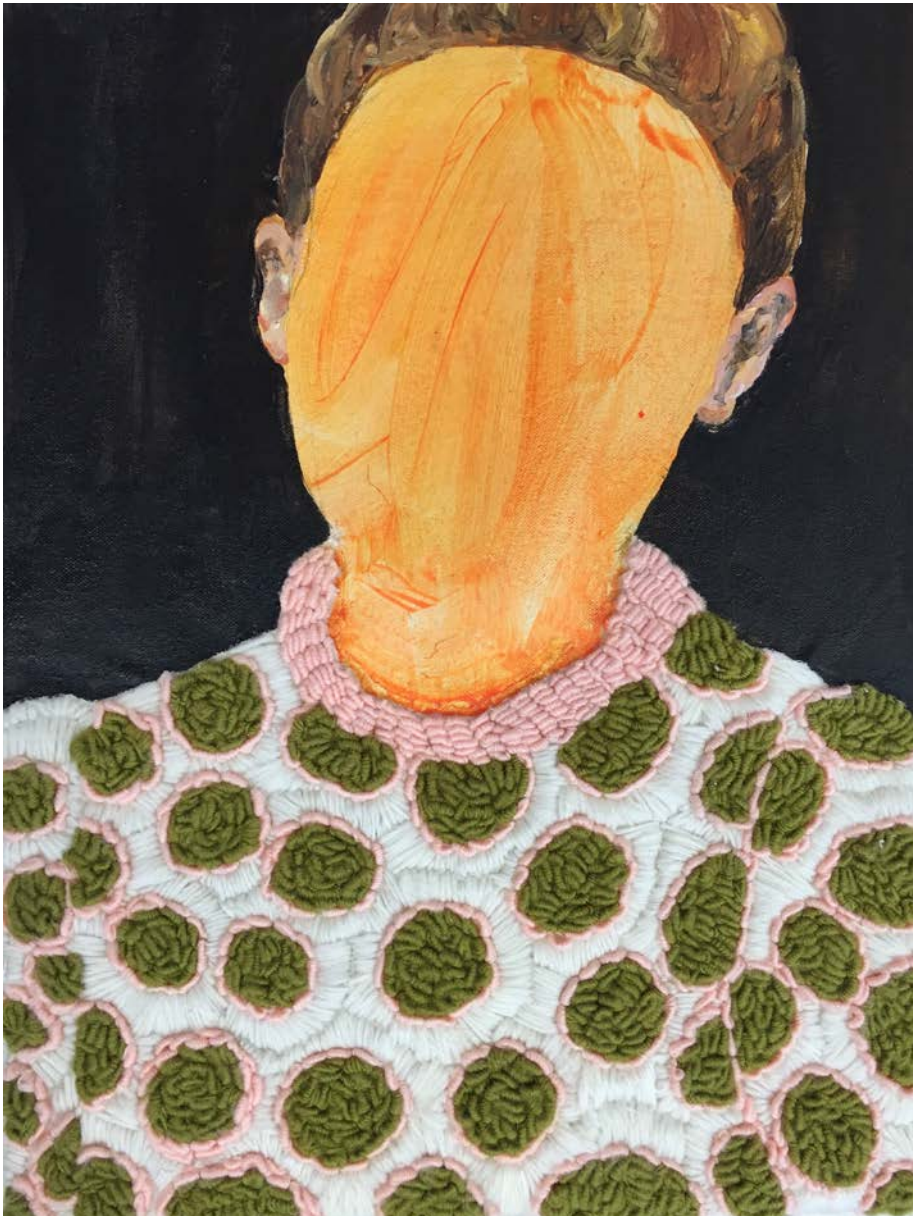
6–8pm



Jennifer Louise Martin
Blue Funk, 2015
Hand embroidery with wool
and acrylic on canvas
30 x 40cm



Jennifer Louise Martin
In the Pink II, 2015
Hand embroidery with wool,
beads and acrylic on canvas
30 × 40cm



Jennifer Louise Martin
So near but yet so far, 2015
Hand embroidery with wool
and acrylic on canvas
30 x 40cm



Jennifer Louise Martin
The succulent, 2015
Acrylic and spray paint on canvas
120 × 160cm



Charis Entwisle
Back tonight to sleep again, 2017
Oil on canvas, stretched onto board
90cm x 120cm



Charis Entwisle
Everyday, 2017
oil on canvas, stretched onto board
90cm x 120cm



Charis Entwisle
Some free time remains, 1, 2017
Oil on MDF board
100 × 80 cm



Charis Entwisle
Some free time remains, 2, 2017
Oil on MDF board
100 × 80 cm



Charis Entwisle
Easier Ways To Sleep, 2017
Oil on canvas stretched on board
90 × 120 cm



Pat O'Connor
Chocolate, 2004
Oil on gesso board
26.5 × 19.5 × 1.0cm



Pat O'Connor
Coco, 2017
Oil on gesso board
17.5cm x 21.8cm x 0.6cm



Pat O'Connor
Mrs Walter Lang, 2017
Oil on gesso board
43.5 × 34.1cm × 3.2cm



Pat O'Connor
Hunting, 2017
Oil on board
29.4 × 24.7 × 2.0cm



Pat O'Connor
Hunting, 2017
Oil on canvas
30.3 × 30.3 × 2.0cm



Pat O'Connor
Magician, 2017
Oil on board
33 x 21.3 x 0.6cm



Pat O'Connor
Rope, 2009
Oil on board
24.1 × 24.0 × 3.5cm



Pat O'Connor
Skins Smoking, 2017
Oil on gesso board
20.6 × 12.5cm × 0.6cm



Daniel Wheeler
Untitled, 2014
Carbon on Paper
56.5 × 75cm



Daniel Wheeler
J'arrivé, 2014
Carbon on Paper
56.5 × 75cm



Daniel Wheeler
Fume, 2015
Oil on linen
210 × 160 cm

Press Release

*Imagined Characters*22nd March –
14th April 2018*Private View:**Wednesday 21st March, 6–9pm*Charis Entwisle
Pat O'Connor
Jennifer Louise Martin
Daniel Wheeler

Sid Motion Gallery is pleased to present the group exhibition, 'Imagined Characters', which includes recent paintings and works on paper by Charis Entwisle, Pat O'Connor, Jennifer Louise Martin and Daniel Wheeler.

By working from found images, Jennifer Louise Martin and Pat O'Connor question the ideals of beauty portrayed in celebrity culture and commercial fashion campaigns, adding a surreal twist as they recreate these subjects in paint.

Pat O'Connor's meticulous handling of paint leads us into a darker truth of these apparently glamorous worlds. Jennifer Louise Martin abstracts elements of the figure, weaving fictions around the images we are so accustomed to in the world of fashion photography.

Both Charis Entwisle and Daniel Wheeler stage their compositions with models and props, before depicting their subjects on canvas.

Daniel Wheeler uses a hyper realistic style that challenges the photographic; Charis Entwisle's atmospheric scenarios play on pop culture.

Through this theatrical character building the paintings investigate contemporary narratives and personal style, identity and the viewers gaze in the age of the selfie.

—

Charis Entwisle (b.1997, Bristol, UK) is currently studying Fine Art at Central Saint Martins College of Art and Design. He currently lives and works in London.

Pat O'Connor graduated from Royal College of Art London in 1996. O'Connor's recent projects include *Lived on the Bone*, Govan Project Space, Glasgow, 2018; *Zennor Project Space Residency*, Cornwall, 2017; *Paw*, Arcade, London, 2015 and *Night of the Big Tops*, The Dentist, London, 2014. She won the Studio Voltaire, *Aldeburgh Beach Lookout Residency Prize* and was selected for the *John Moore's Painting Prize*, 2012. She currently lives and works in London.

Jennifer Louise Martin (b.1980, London, UK) completed a Diploma in Art & Design at Central Saint Martins College of Art and Design before going on to do Psychology and Neuroscience at the University of Leeds, UK She then went onto complete a Postgraduate Diploma in Fine Art at Byam Shaw School of Art, Central Saint Martins, London. Recent solo exhibitions have included a *Brand Collaboration with Zanzan Eyewear & Laura Bailey*, Alex Eagle Studio, London, 2017; *The Absence of Presence*, Gallery 151, New York, 2013 and *(Re) Fashioning the Gaze*, Oak Tree & Tiger Gallery, London. She has exhibited extensively internationally in group exhibitions, Art Fairs and residencies.

Daniel Wheeler (b.1976, West Yorkshire, UK) lived and worked predominantly in Europe, later returning to the UK to study Fine Art at Chelsea College of Art, 2009–2013. In 2014 Wheeler was shortlisted for the *Clyde and Co Art Award* and the *Jerwood Drawing Prize*. In that year he was also longlisted for the *John Moores Painting Prize*. He currently lives and works in Southend.