

# Max Wade



Preview  
Autumn 2021



Cowboy, 2021  
Oil on panel  
82.5 × 62.5 cm  
93 × 73 cm (framed)



*Rolling turf*, 2021  
Oil on panel  
80 × 60 cm  
86.5 × 67 cm (framed)





*Dancing Ribbons*, 2021  
Oil on panel  
62.5 × 82.5 cm  
73 × 93 cm (framed)



*Best Foot Forward*, 2021  
Oil on panel  
62.5 × 82.5 cm  
73 × 93 cm (framed)



*Factories, 2021*  
Oil on panel  
62.5 × 82.5 cm  
73 × 93 cm (framed)





*Saloon Doors*, 2021  
Oil on panel  
82.5 × 62.5 cm  
93 × 73 cm (framed)



*Cooking with Gas, 2021*

Oil on panel

63 × 82 cm

73 × 93 cm (framed)





Cosmic Dancer, 2021  
Oil on panel  
60 × 80 cm  
67 × 86.5 cm (framed)



*View from the Window*, 2021

Oil on panel

83 × 63 cm

93 × 73 cm (framed)





*Treading Water*, 2021  
Oil on panel  
62.5 × 82.5 cm  
67 × 86.5 cm (framed)





*Sharing a Jar, 2021*  
Oil on panel  
60 × 80 cm  
67 × 86.5 cm (framed)



*Headlights*, 2021  
Oil on panel  
62.5 × 82.5 cm  
67 × 86.5 cm (framed)



*Eyes right*, 2021  
Oil on panel  
80 × 60 cm  
86.5 × 67 cm (framed)





*Kicking King*, 2021  
Oil on panel  
82.5 × 62.5 cm  
93 × 73 cm (framed)



*Rolling Dice, 2021*  
Oil on panel  
60 × 80 cm  
67 × 86.5 cm (framed)



*Capsized*, 2021  
Oil on panel  
60 × 80 cm  
73 × 93 cm (framed)





*Painter's tools*, 2021  
Oil on canvas  
80 × 60 cm  
86.5 × 67 cm (framed)



*Front Crawl*, 2019–2021

Oil on linen

66 × 81.5 cm

72.5 × 88 cm (framed)





*Table Wine*, 2021  
Oil on linen  
180 × 150 cm  
188 × 158 cm (framed)





*Picnic at the Riverbank, 2021*

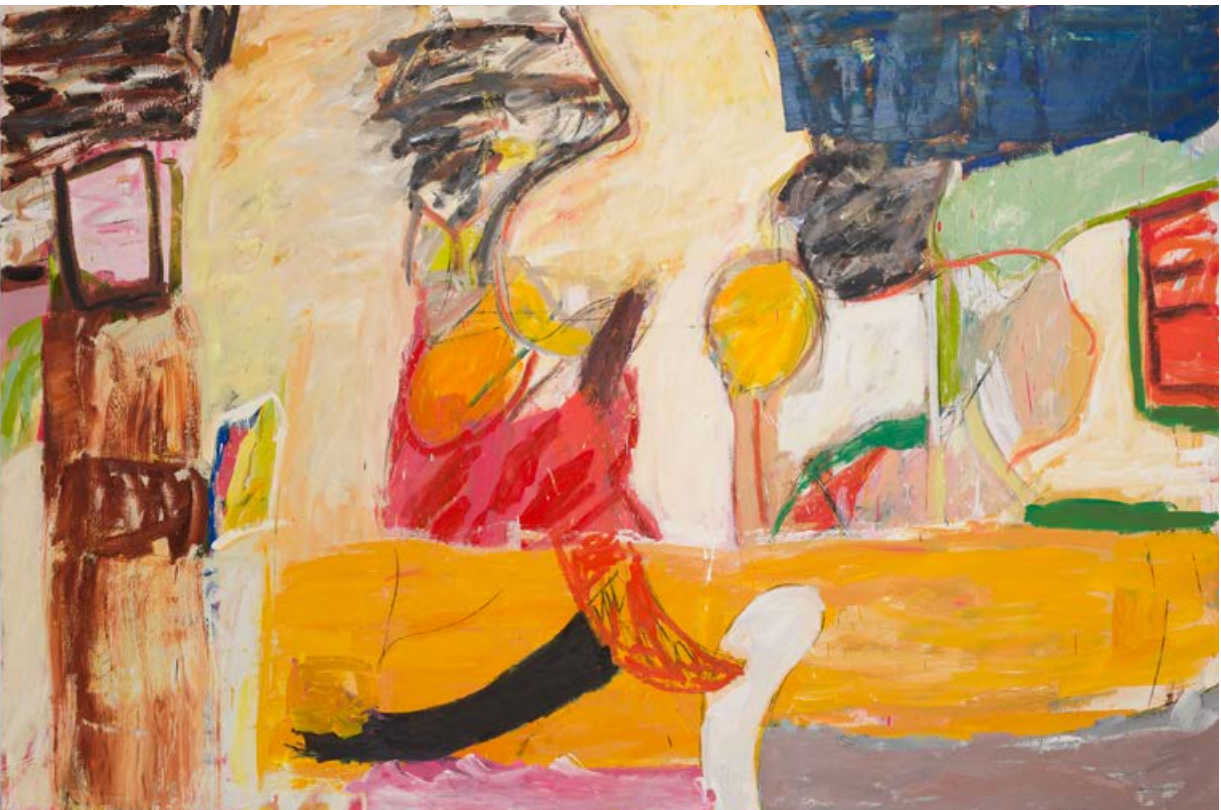
Oil on linen

160 × 200 cm

168 × 208 cm (framed)



*Balcony Man*, 2021  
Oil on linen & canvas  
Diptych, 180 × 300 cm



*Moonshine, 2021*  
Oil on canvas  
200 × 300 cm





*Riding into town, 2021*  
Oil on canvas  
200 × 300 cm



*Pendulum*, 2021  
Oil on canvas  
Diptych, 240 × 360 cm



*Inside Nina's room, 2021*  
Oil on canvas  
Diptych, 240 × 400 cm



Max Wade (b. 1985, London) studied Fine Art Painting at Brighton University. Wade's recent solo exhibitions include; 'Sowing the Soil with Salt', Sid Motion Gallery, London (2020); 'Platform: London', hosted by David Zwirner (online, 2020); 'Wind for the Sails', Messums Wiltshire, Salisbury (2020); 'Between the Dog and the Wolf', Sid Motion Gallery, London (2019); 'For Tina', curated by Roxie Warder hosted at Cob Gallery, London (2019). His residencies include Artist's workshop & Exchange, Muscat, Oman (2013) and Sofia, Bulgaria (2003). Max Wade is based in London, UK.