

Play on Repeat

18 January –
17 February 2018

Louis Caulfield
Alice Irwin
Morgan Wills

sid motion gallery



Private View
Wednesday 17th January
6–9pm

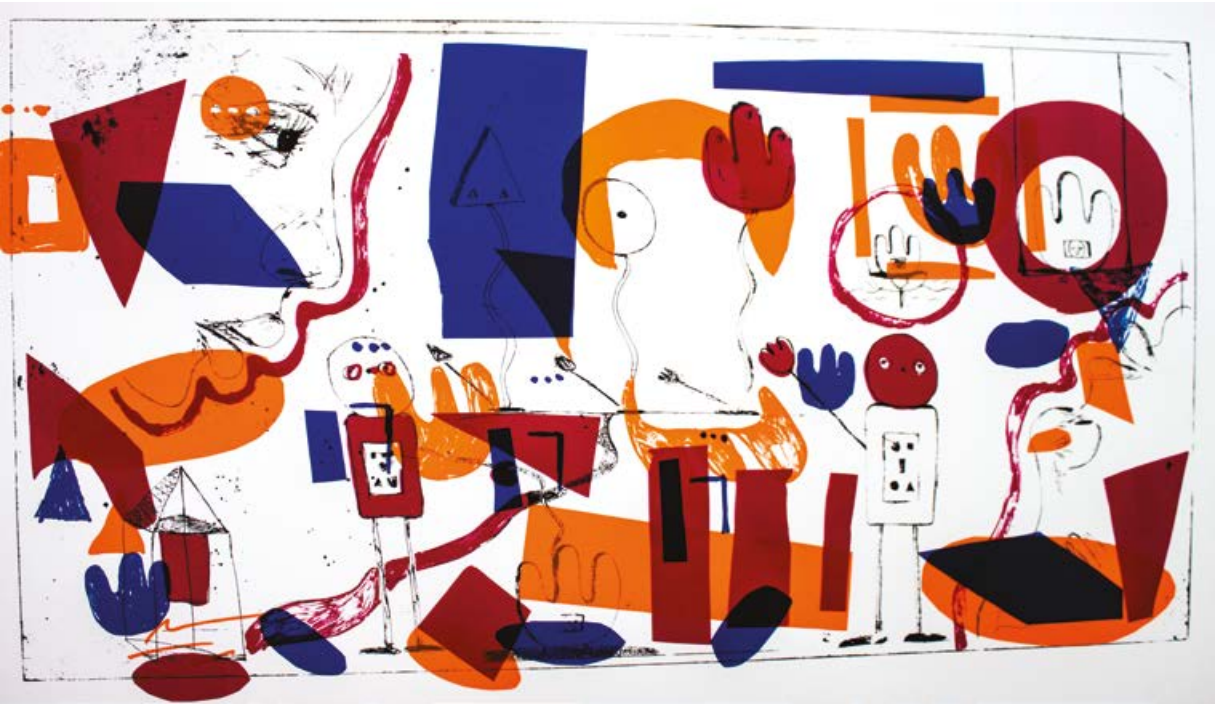
142 York Way, N1 0AX



Alice Irwin
Read a Book).. But why, 2017
Etching screen print, digital
vinyl sticker on paper
100 × 64 cm



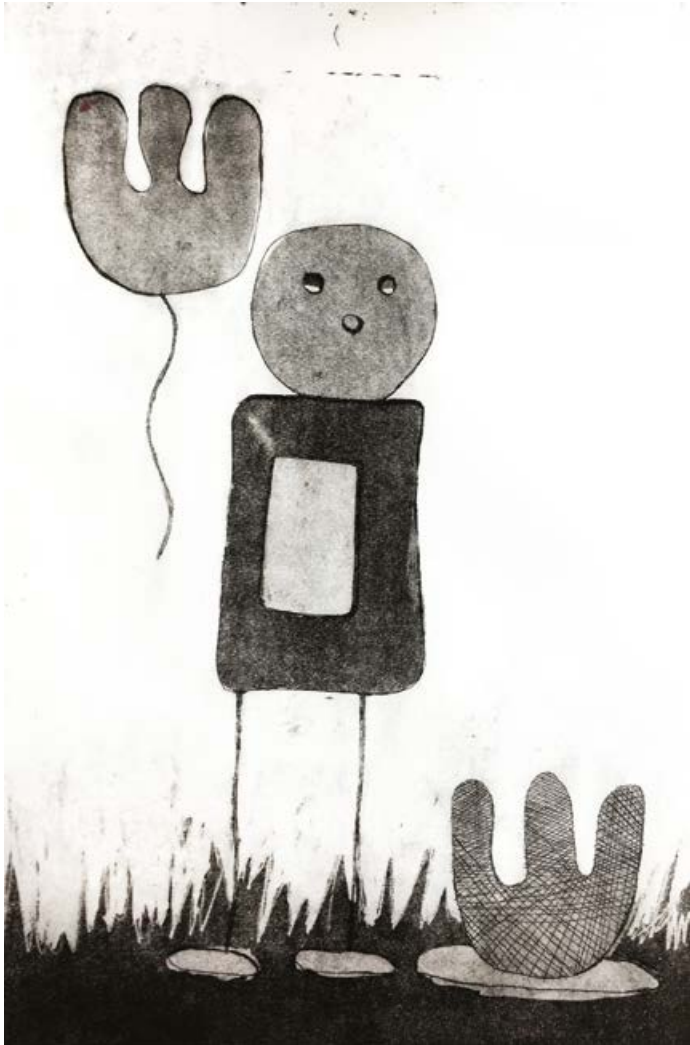
Alice Irwin
(*Read a Book*).. *why so*, 2017
Etching screen print, digital
vinyl sticker on paper
100 × 64 cm



Alice Irwin
(*Read a Book*).. *Maybe 1*, 2017
Etching screen print on paper
100 × 64 cm



Alice Irwin
(*Read a Book*).. *Maybe 3*, 2017
Etching screen print on paper
100 × 64 cm



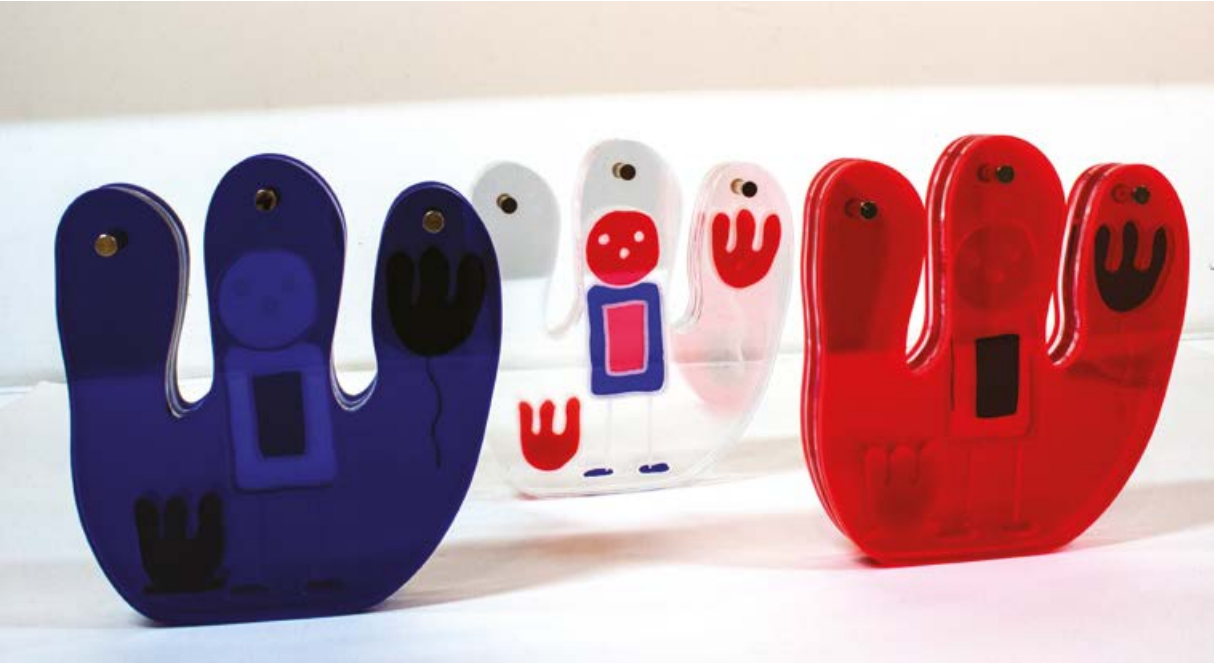
Alice Irwin
Hide and seek 3, 2017
Etching on paper
30 × 45 cm



Alice Irwin
Hide and seek 2, 2017
Hand coloured etching, digital
vinyl sticker on paper
30 × 45 cm



Alice Irwin
Hide and seek 1, 2017
Hand coloured etching, digital
sticker on paper
30 × 45 cm



Alice Irwin
Memory Play, 2017
Engraved Perspex acrylic
19.5 × 20.5 × 3.5 cm
Available in Clear, Blue, and Orange



Morgan Wills
Monochrome Portrait, 2017
Acrylic on canvas
91 × 107 cm



Morgan Wills
Studio Profile Portrait, 2017
Oil and acrylic on canvas
91 × 107 cm



Morgan Wills
Mirror Loop, 2017
Painted clay



Morgan Wills
Heads, 2017
Oil and acrylic on canvas
70 × 80 cm



Morgan Wills
Foot, 2017
Painted clay



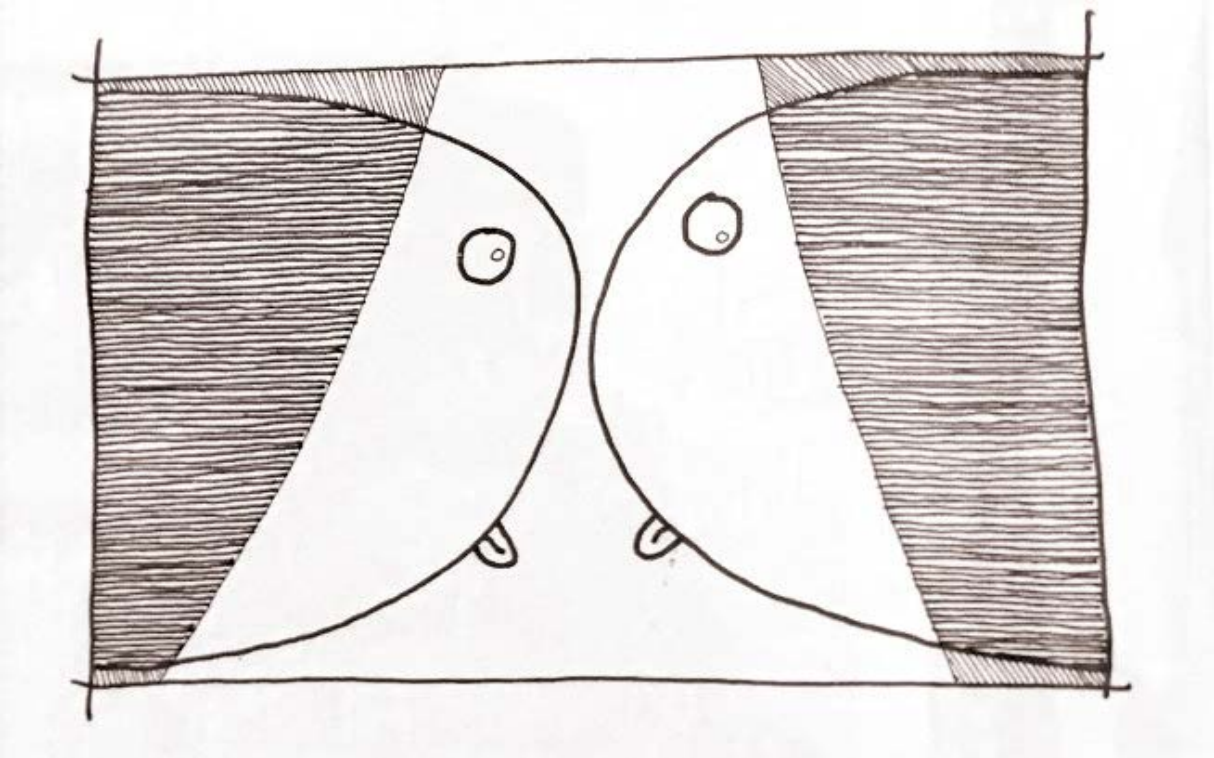
Morgan Wills
Rocket, 2017
Oil and acrylic on canvas
35 × 60 cm



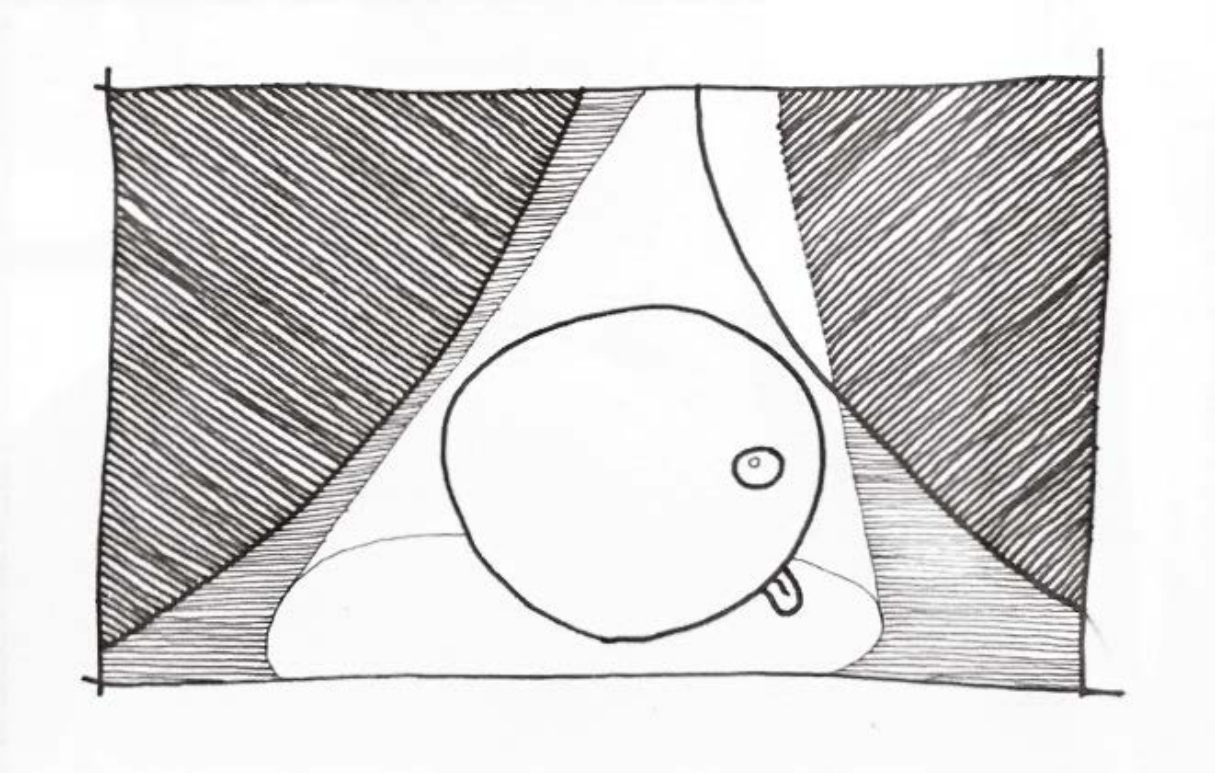
Morgan Wills
Janus figure in profile, 2017
Painted clay



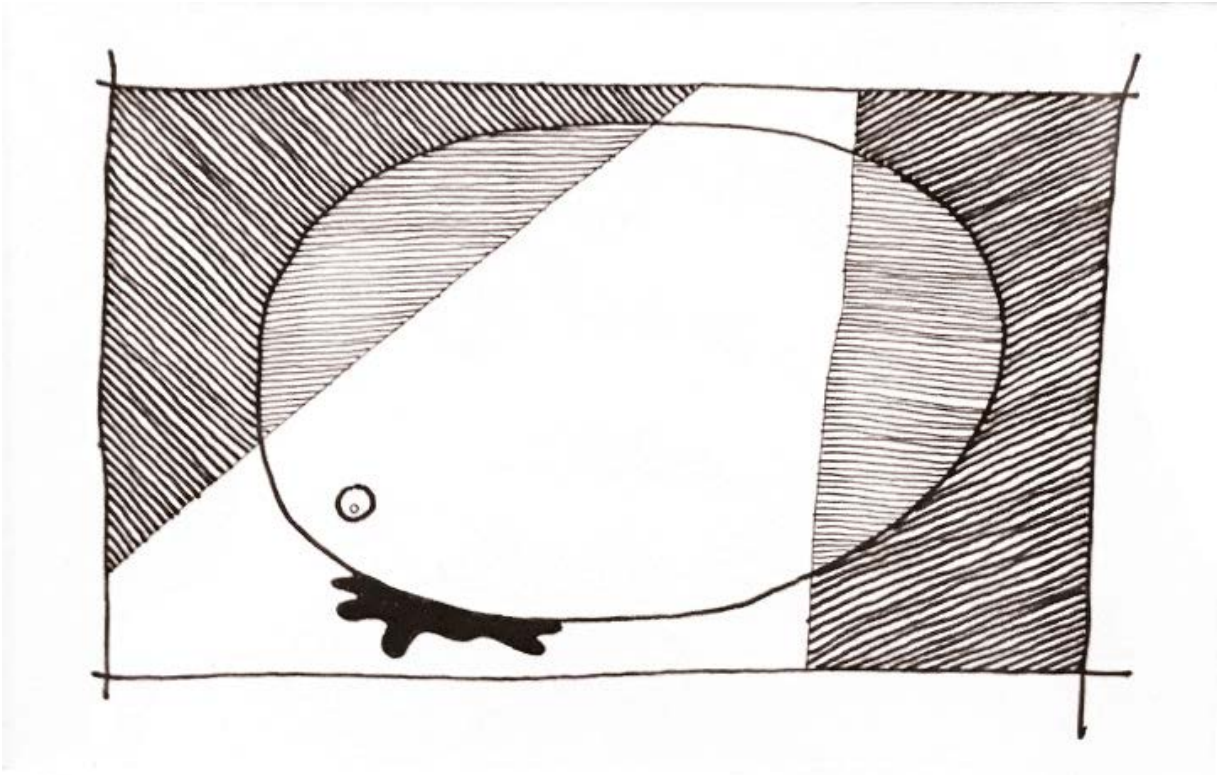
Morgan Wills
Ink drawings on Watercolour paper, 2017
14.75 x 21 cm



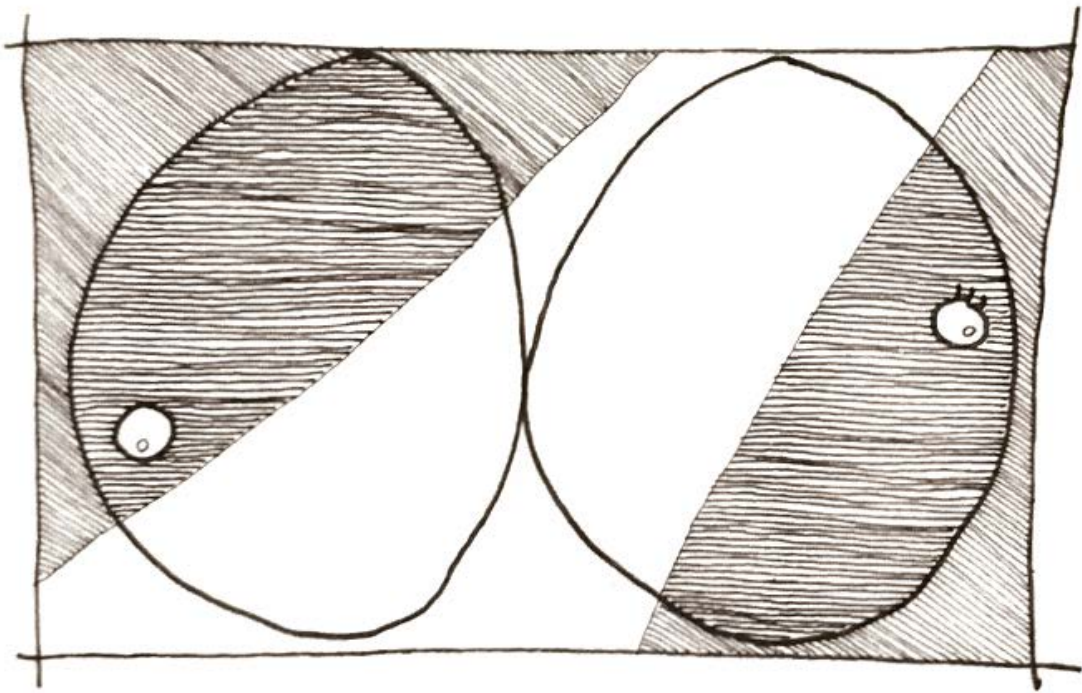
Louis Caulfield
2017 meets 2018, Copenhagen
January 2018
Ink on 300gsm watercolour paper
14.8 × 10 cm



Louis Caulfield
Drawn to the Light, London
January 2018
Ink on 300gsm watercolour paper
14.8 × 10 cm



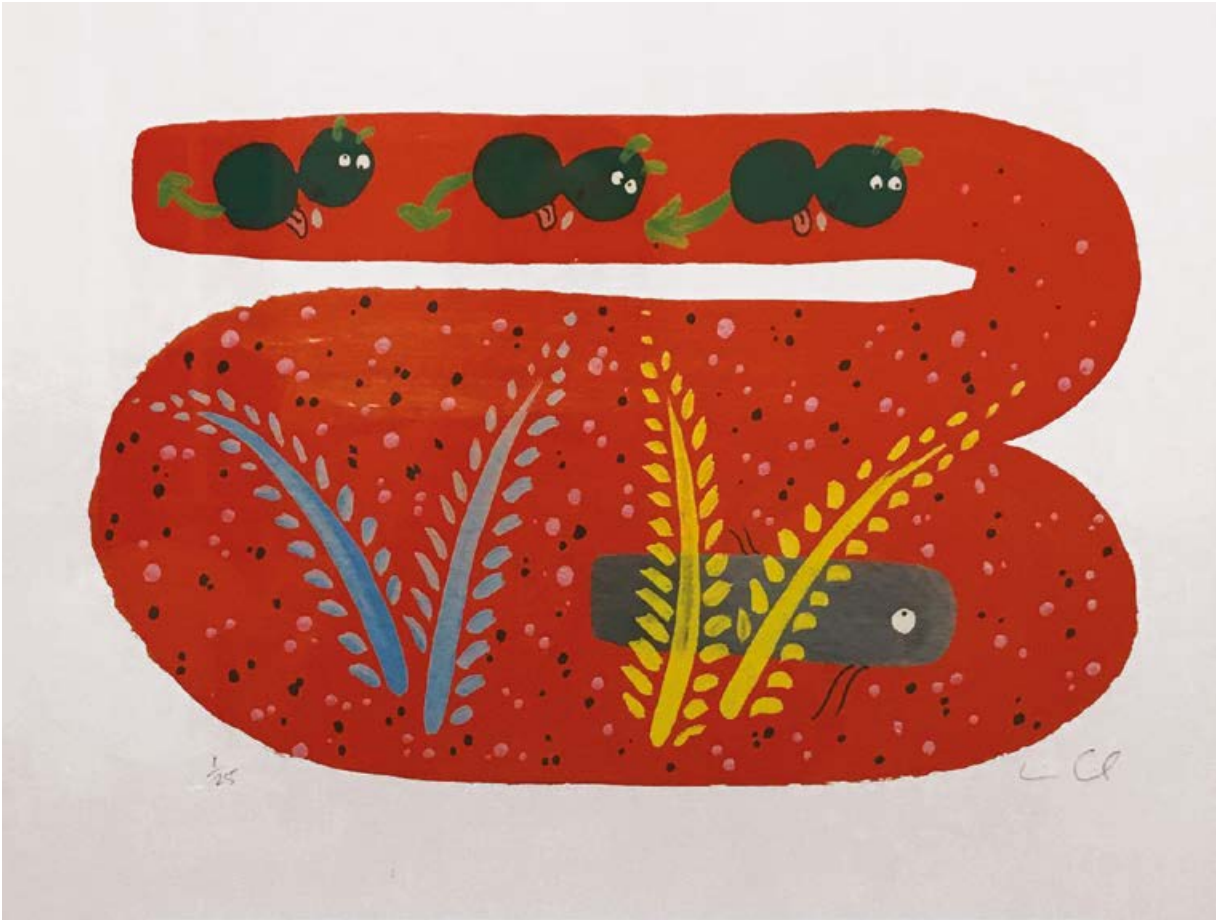
Louis Caulfield
The Awakening, London, January 2018
Ink on 300gsm watercolour paper
14.8 x 10 cm



Louis Caulfield
Arguing, 2018
Ink on 300gsm watercolour paper
14.8 x 10 cm



Louis Caulfield
Survivours, December 2015
Giclee print using Lucia inks on Hahnemuhle
308gsm Deckle edge photo rag
42.5 × 52.5 cm
Edition 1 of 25



Louis Caulfield
Self-Shooters round the Bend, November 2015
Giclee print using Lucia inks on Hahnemuhle
308gsm Deckle edge photo rag
42.5 × 52.5 cm
Edition 1 of 25



Louis Caulfield

Life in Lieu, December 2015

Giclee print using Lucia inks on Hahnemuhle

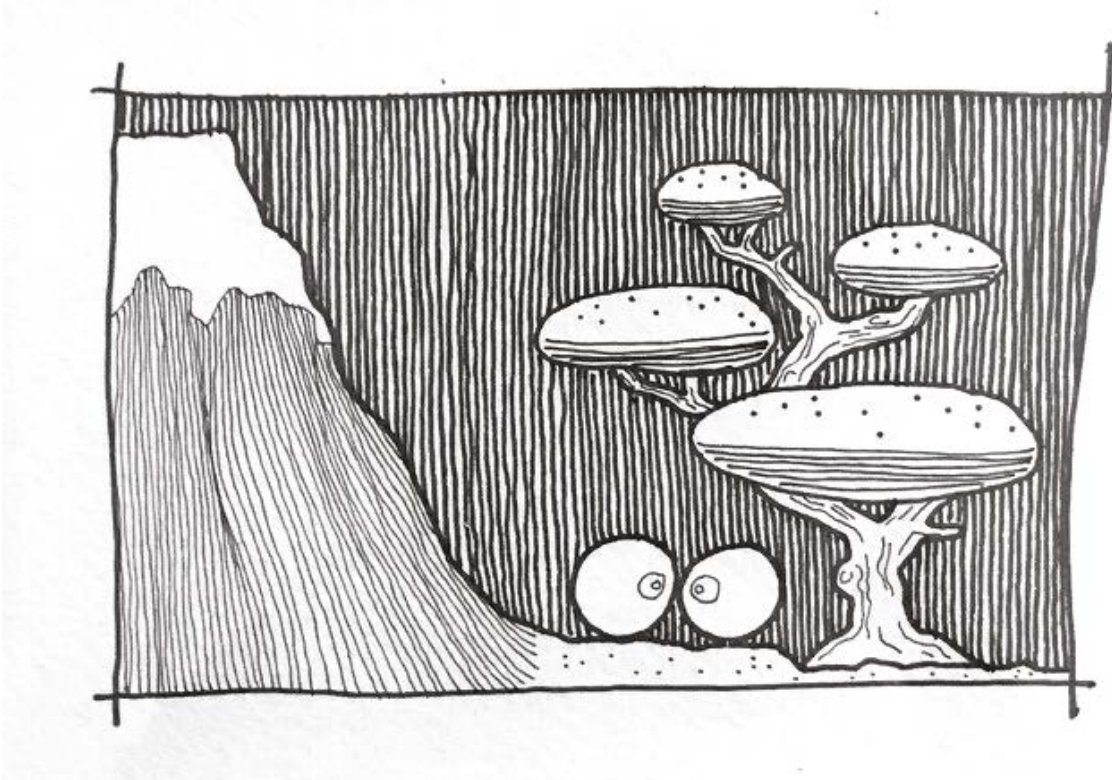
308gsm Deckle edge photo rag

42.5 × 52.5 cm

Edition 1 of 25



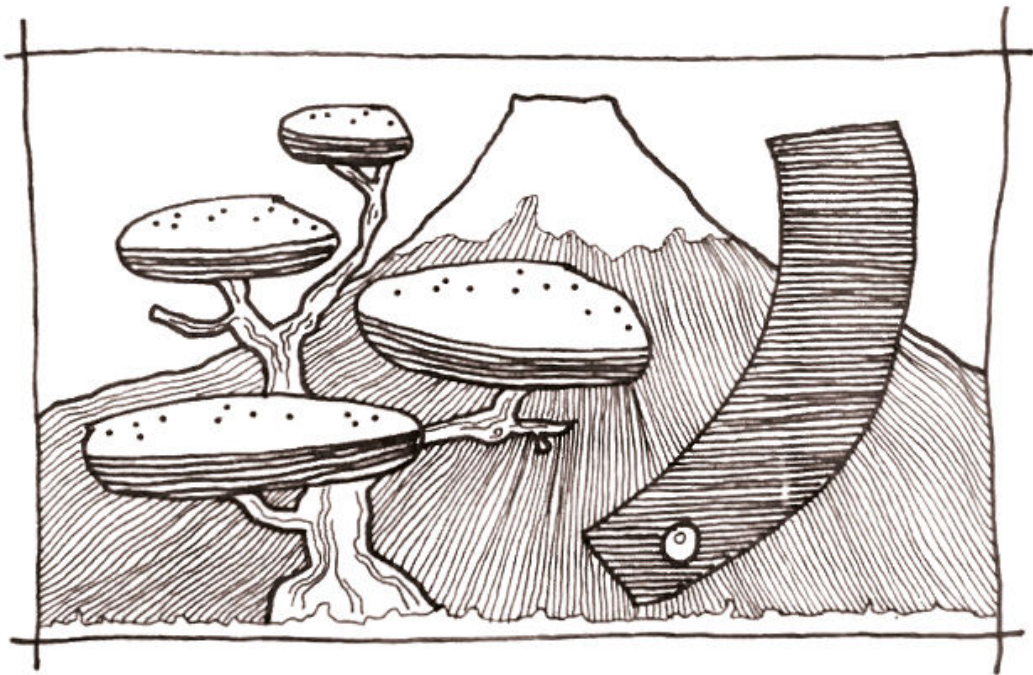
Louis Caulfield
Love Japan, August 2017
Gouache on 300gsm watercolour paper
14.8 × 10 cm



Louis Caulfield
Fuji Fools, London, January 2018
Ink on 300gsm watercolour paper
14.8 × 10 cm



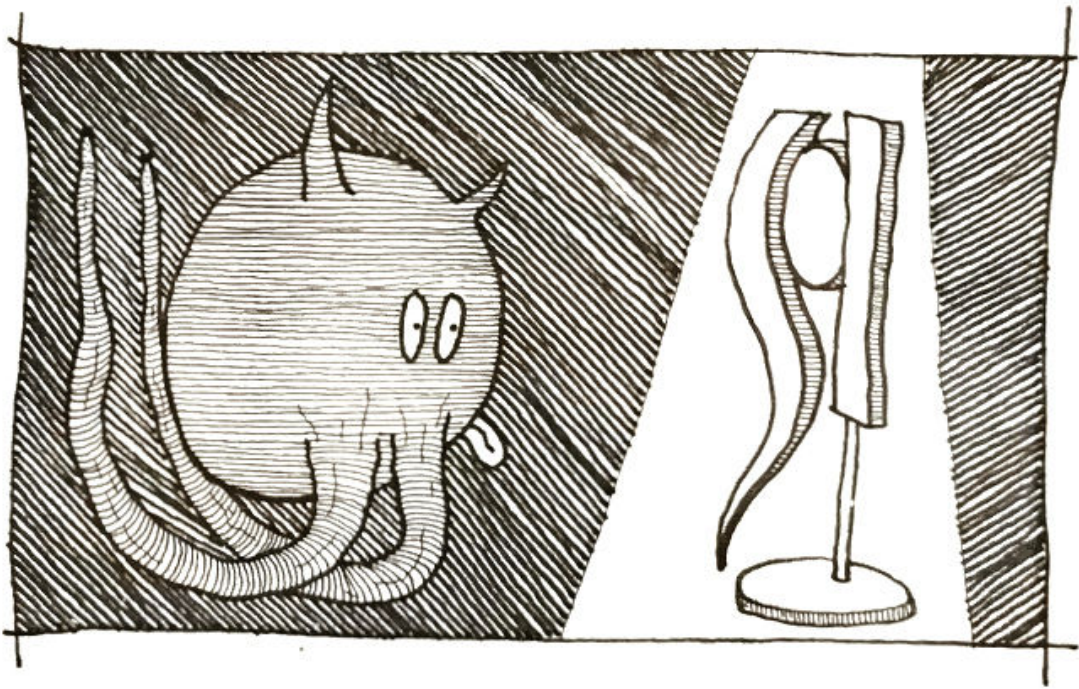
Louis Caulfield
Sakura, Denmark, August 2017
Gouache on 300gsm watercolour paper
14.8 × 10 cm



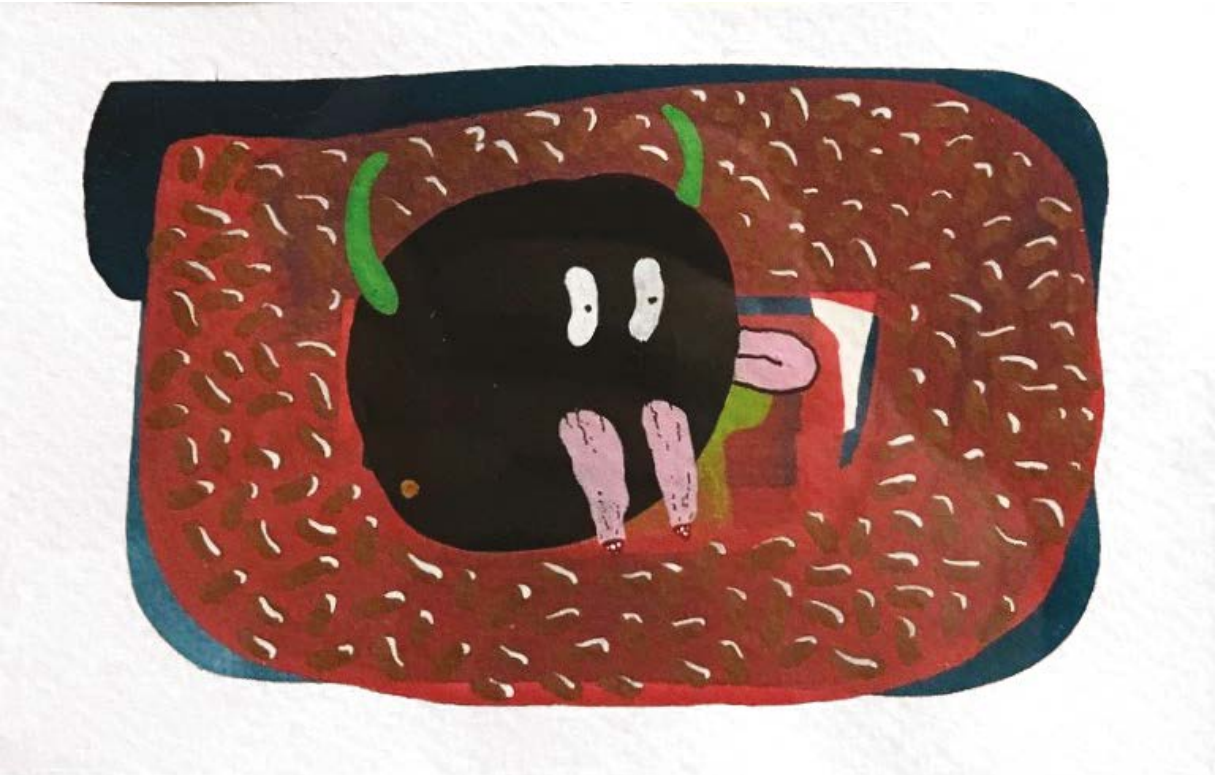
Louis Caulfield
Easy Peasy, London, January 2018
Ink on 300gsm watercolour paper
14.8 × 10 cm



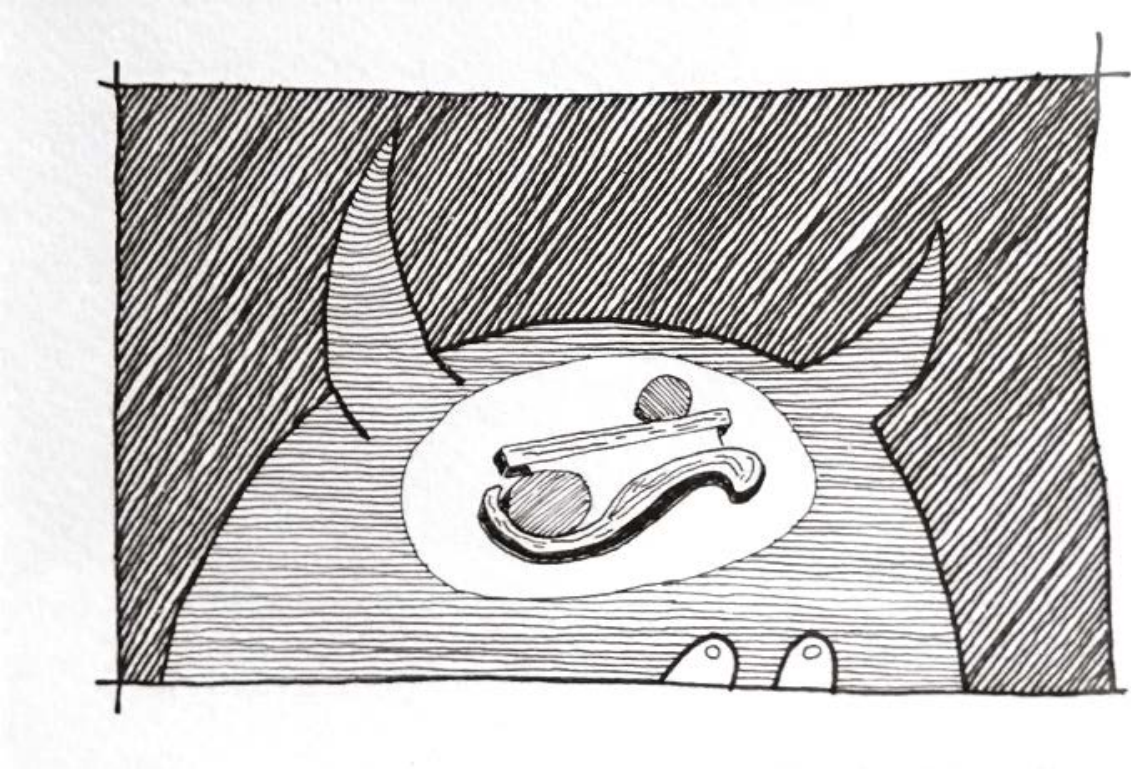
Louis Caulfield
On the Run from the Art World
Footnote, Alonissos, August 2017
Gouache on 300gsm watercolour paper
14.8 × 10 cm



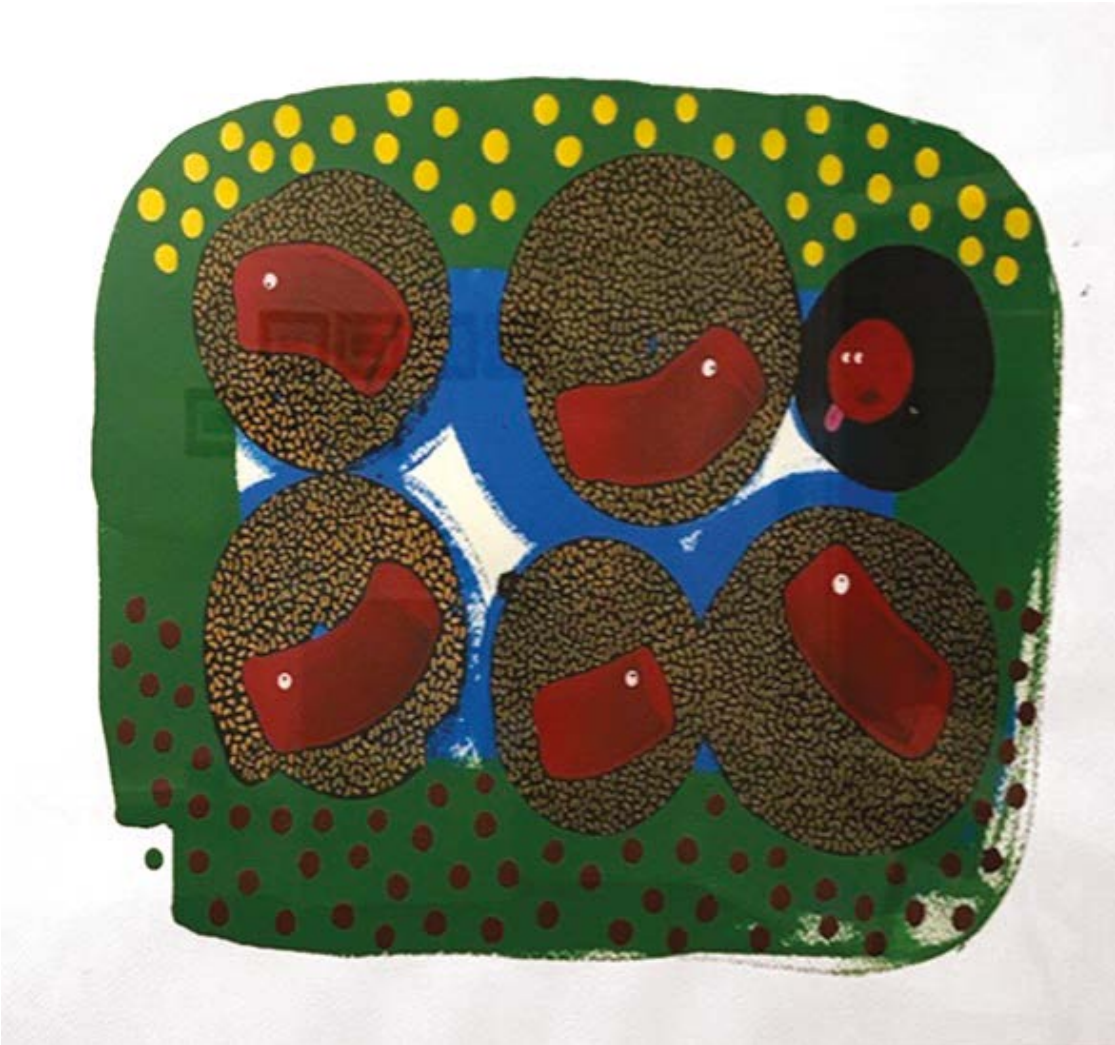
Louis Caulfield
The Art World Footnote Contemplating,
London, January 2018
Ink on 300gsm watercolour paper
14.8 x 10 cm



Louis Caulfield
Art World Footnote, Alonissos, August 2017
Gouache on 300gsm watercolour paper
14.8 × 10 cm



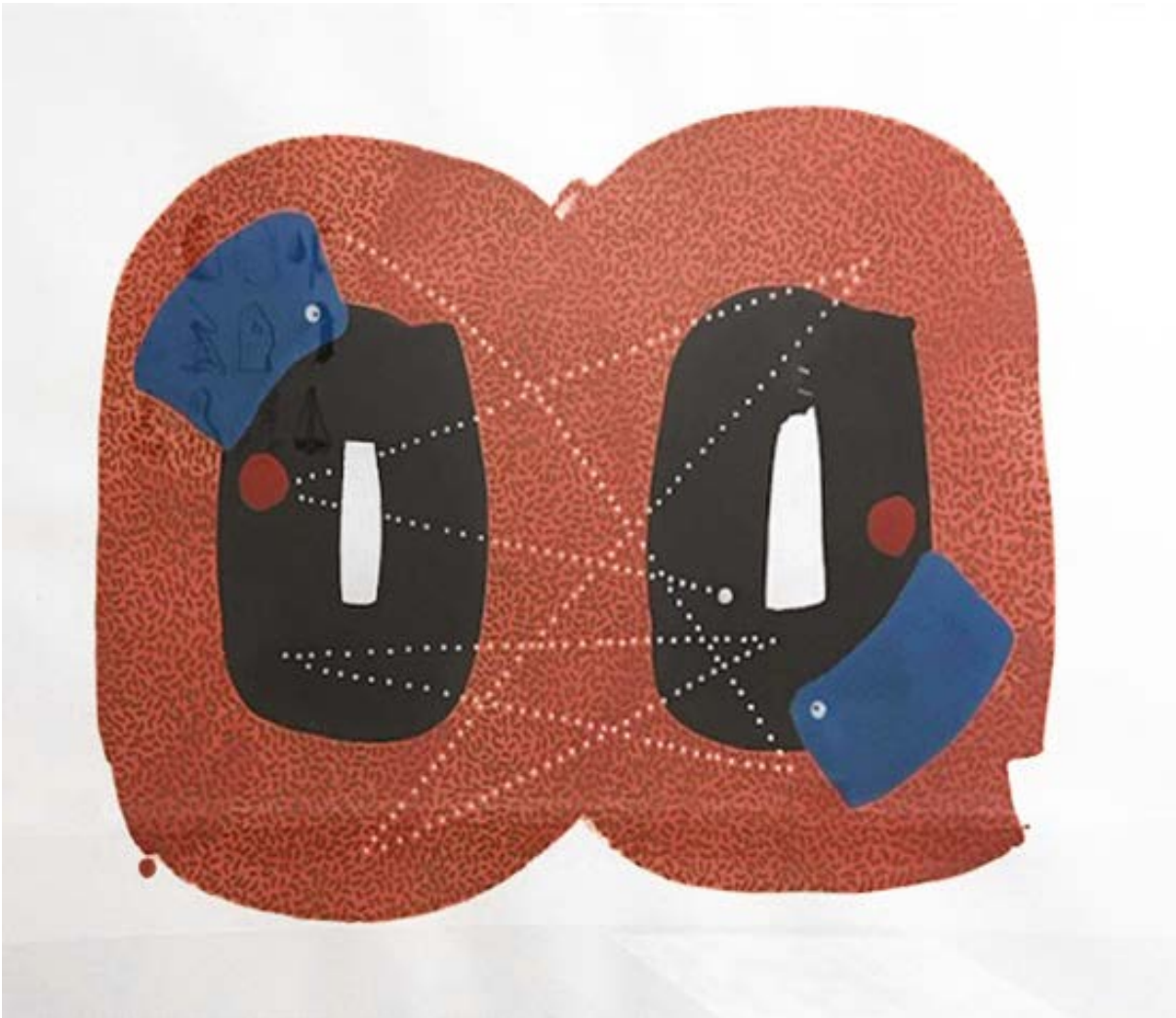
Louis Caulfield
Idea Forming, London, January 2018
Ink on 300gsm watercolour paper
14.8 × 10 cm



Louis Caulfield
Rookie, November 2017
Acrylic and Indian ink all on 425gsm
Waterford paper
67.25 × 86.75 cm



Louis Caulfield
Working Relationship, November 2017
Acrylic and Indian ink all on 425gsm
Waterford paper
67.25 × 86.75 cm



Louis Caulfield
4 Seconds of Table Tennis,
November 2017
Acrylic and Indian ink all on 425gsm
Waterford paper
67.25 × 86.75 cm

Press Release

Play on Repeat
Louis Caulfield
Alice Irwin
Morgan Wills

18th January –
17th February 2018

Private View:
Wednesday 17th January, 6–9pm

Sid Motion Gallery is pleased to present a group exhibition, *Play on Repeat*, which includes new sculpture, painting and works on paper by Louis Caulfield, Alice Irwin and Morgan Wills.

Conceived around ideas of play and repetition, 'Play on Repeat' explores how these artists are using various mediums in their imaginative investigations of this broad field. All three artists included in the exhibition use the repetition of a motif or an imagined character, which often become abstract forms within the composition.

Based on the notion of play as an activity for enjoyment and fun filled creativity, rather than for a practical purpose, the show's curation aims to echo this stream of thought at the core of each of the artists' practice with a playful display of mixed media, styles and vibrant colour.

All the works here have a strong sense of humour but are never entirely light-hearted: Caulfield's works delve into deeper emotional situations, and both Irwin and Wills invoke the darker and more macabre aspects of humour in a show that is as thought-provoking as it is enjoyable.

—
Louis Caulfield graduated from Wimbledon School of Art in 1994 after a Foundation course at Chelsea School of Art & Design in 1992. Pursuing an interest in Film, since graduating Caulfield has worked as a lighting cameraman working predominantly on documentaries about Art and History. Rediscovering the joy of painting only a few years ago, in December of 2016 Caulfield exhibited in a two-man exhibition, 'Look at Us' at Cob Gallery, London.

Alice Irwin (b.1994) is currently completing MA Fine Art Print at Royal College of Art, London (2016–18), she graduated from BA Fine Art from City and Guilds of London Art School, London in 2016. Irwin has recently completed a Project-based residency at Griffin Gallery, London. Irwin has been in group shows including 'Like Literally', Hockney Gallery, London; 'NOPE', Bankside Gallery, London; 'Mono', Flowers Gallery, London, 'AKAA', Contemporary Art and Design Fair, Paris – to name just a few. Irwin was awarded the Contemporary Art Trust Prize, Bankside Gallery in 2017, and the Norman Ackroyd Etching Prize in 2016.

Morgan Wills (b.1992) studied Painting at Wimbledon College of Art, graduating in 2014. His previous exhibitions include '12 Conversations', Sid Motion Gallery, London, 2016; 'Sorry About Last Night', The Washington, Sheffield; 'Versions', Benevolent Association of Excellent Solutions, London; 'Bloomberg New Contemporaries', 2015, ICA, London and Backlit Gallery, Nottingham; 'MK Open', MK gallery, Milton Keynes, and 'Assembly' at Triangle Gallery, London. Wills was shortlisted in 2014 for the HIX Award, shown at CnB Gallery, London, and has recently completed a three month Studio Residency at Unit 1 Gallery, London.